

P
N
M
L
K
J
H
G
F
E
D
C
B
A

2024 ARMY STANDARD REQUIRED ROOM MODULE CONFIGURATIONS



US Army Corps of Engineers®

DATE	DESCRIPTION	MARK

DESIGNED BY:	ISSUE DATE:
DRAWN BY:	ISSUE DATE:
CHECKED BY:	SOLICITATION NO.:
SUBMITTED BY:	CONTRACT NO.:
SIZE: ANSI D	

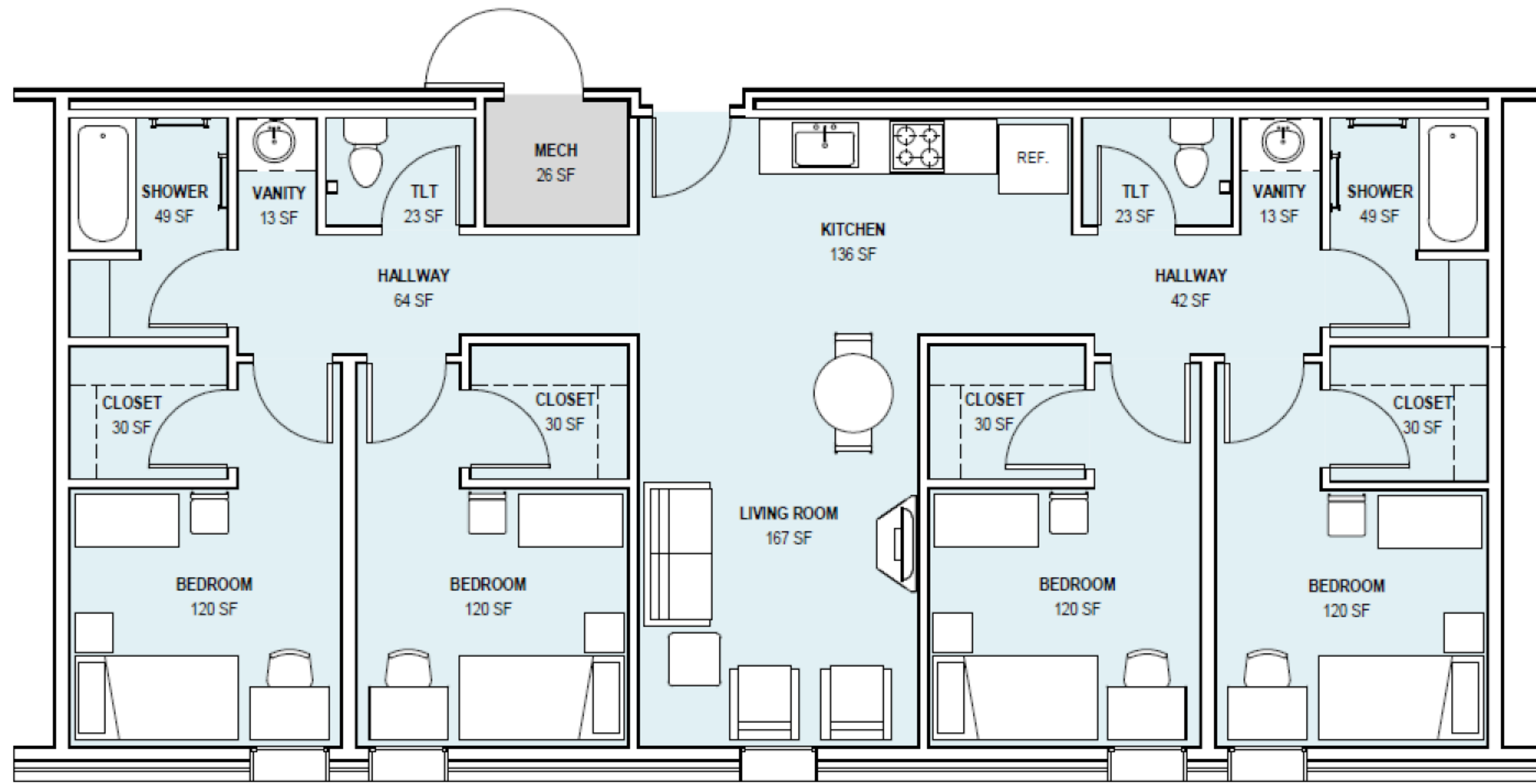
U.S. ARMY CORPS OF ENGINEERS
FORT WORTH DISTRICT
819 TAYLOR STREET
FORT WORTH, TEXAS

CENTER OF STANDARDIZATION

2024 Army Standard
Room Module Configuration

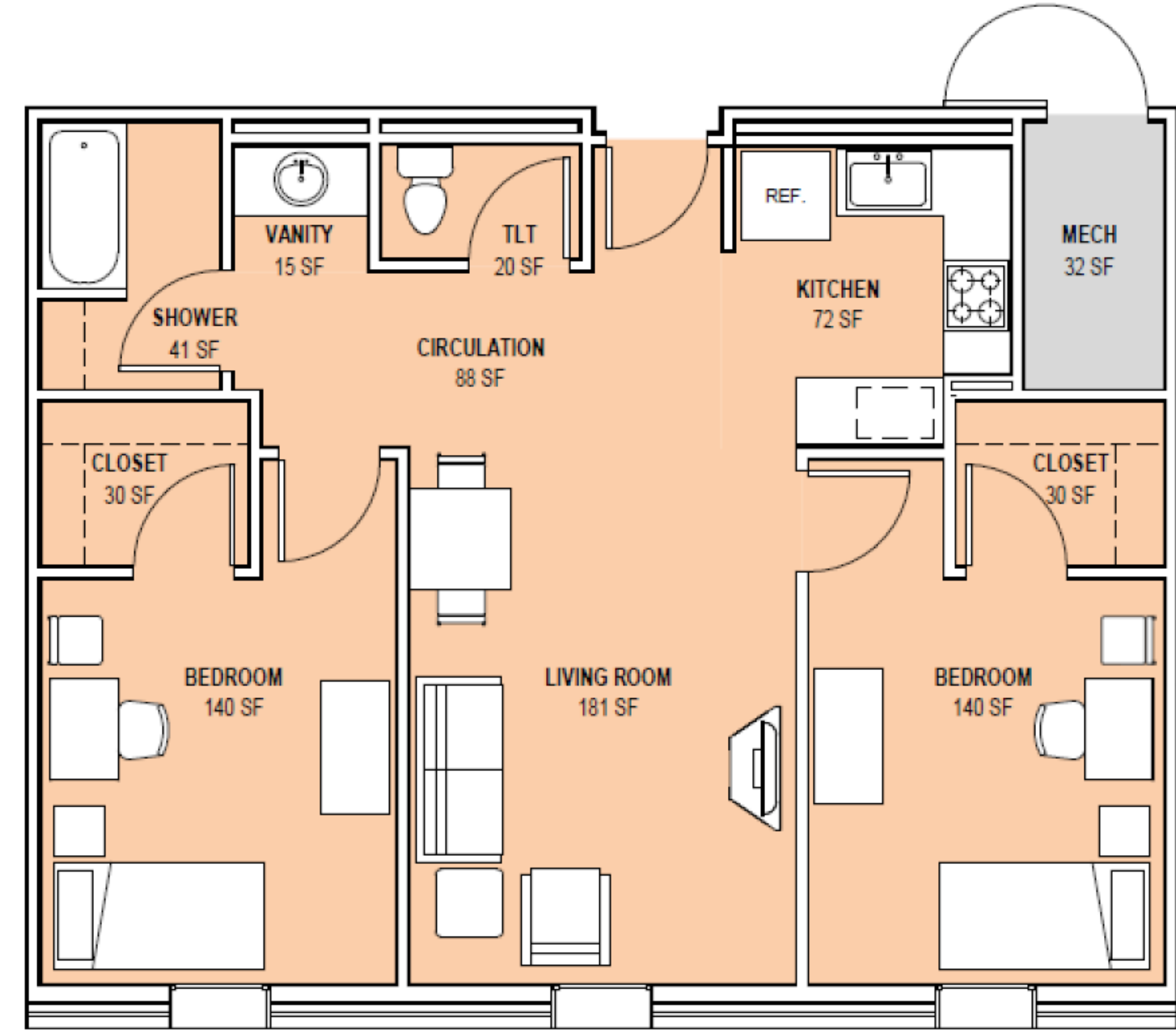
SHEET ID

A-100



E1-E4 ROOM MODULE

- Four private 120 SF bedrooms, two shared baths
- Includes one kitchen for four soldiers
- Separated toilet & shower rooms
- Does not include in-suite washer/dryer



E5-E6 MODULE

- Two private 140 SF bedrooms, one shared bath
- Include one kitchen for two soldiers
- Separated toilet & shower rooms
- Does not include in-suite washer/dryer.



Not For Construction